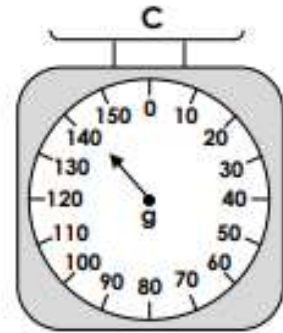
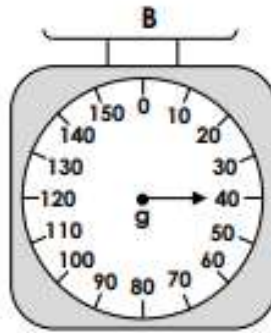
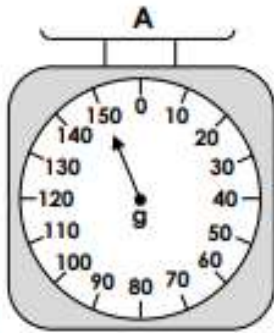


Year 2 Maths Homework

Measure Mass in Grams

1. Match each item to the correct scale.



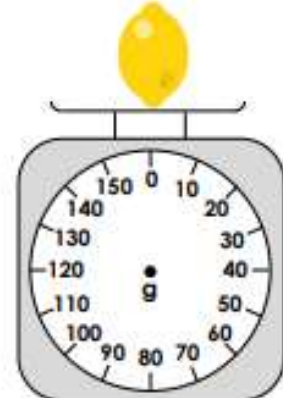
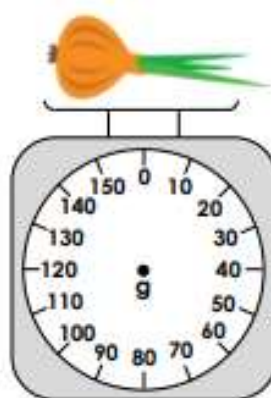
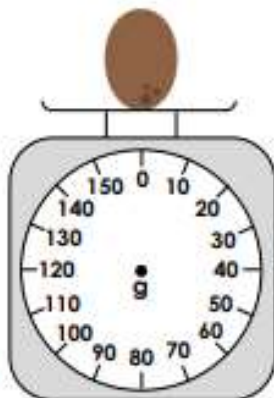
VF
HW/Ext

2. Draw the pointer in the correct position on the weighing scales.

70g

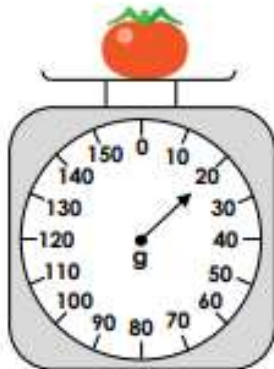
110g

80g



VF
HW/Ext

3. The carrot weighs twice as much as the tomato. Alfie has some 5g and 10g weights. Which weights could he use to balance the scales? Find 3 possible answers.



RPS
HW/Ext

Measure Mass in Grams

4. Match each item to the correct scale.



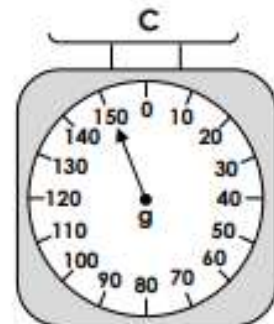
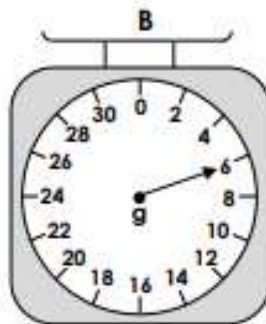
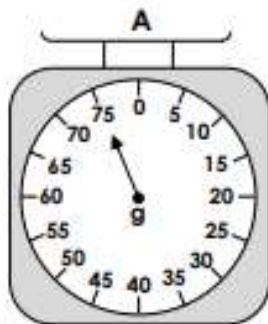
6g



150g



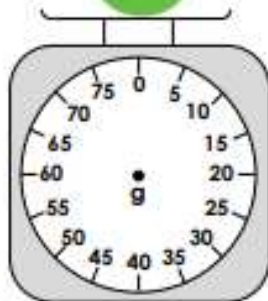
75g



VF
HW/Ext

5. Draw the pointer in the correct position on the weighing scales.

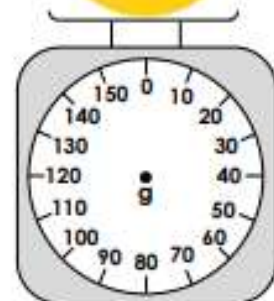
75g



12g

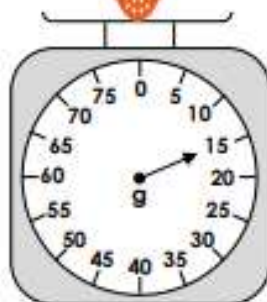


140g



VF
HW/Ext

6. The pear weighs twice as much as the strawberry. Charlie has some 2g, 5g and 10g weights. Which weights could he use to balance the scales? Find 3 possible answers.



RPS
HW/Ext