

14/11/23

Year 5/6 Maths Homework

- Year 5

1) $\frac{10}{12} - \frac{3}{12} =$

2) $\frac{5}{7} - \frac{3}{7} =$

3) $\frac{2}{3} - \frac{1}{3} =$

4) $\frac{3}{4} - \frac{2}{4} =$

5) $\frac{4}{5} - \frac{2}{5} =$

6) $\frac{9}{10} - \frac{3}{10} =$

7) $\frac{7}{8} - \frac{4}{8} =$

8) $\frac{5}{6} - \frac{4}{6} =$

9) $\frac{8}{10} - \frac{1}{10} =$

10) $\frac{11}{12} - \frac{10}{12} =$

ADDING SUBTRACTING FRACTIONS
WITH LIKE DENOMINATORS SHEET 2



1) $\frac{7}{6} + \frac{2}{6} = \frac{\quad}{6}$

2) $\frac{7}{5} - \frac{4}{5} = \frac{\quad}{5}$

3) $\frac{9}{10} - \frac{7}{10} = \frac{\quad}{10}$

4) $\frac{7}{9} + \frac{6}{9} = \frac{\quad}{9}$

5) $\frac{8}{7} + \frac{6}{7} = \frac{\quad}{\quad}$

6) $\frac{11}{4} - \frac{6}{4} = \frac{\quad}{\quad}$

7) $\frac{12}{15} + \frac{7}{15} = \frac{\quad}{\quad}$

8) $\frac{15}{12} - \frac{4}{12} = \frac{\quad}{\quad}$

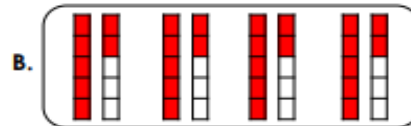
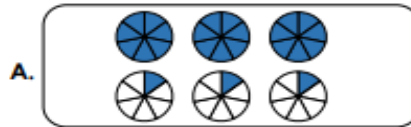
9) $\frac{11}{6} - \frac{7}{6} = \frac{\quad}{\quad}$

10) $\frac{12}{9} + \frac{13}{9} = \frac{\quad}{\quad}$

Year 6

Multiply Fractions by Integers

1. Match the images to the calculation.



1. $4 \times 1\frac{2}{5}$

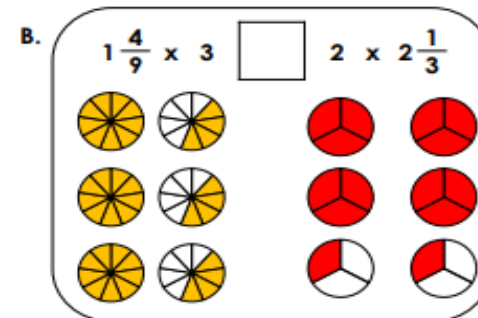
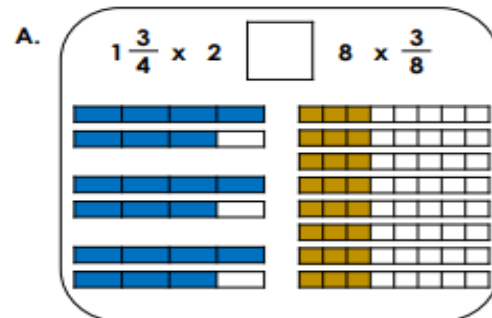
2. $3 \times 3\frac{1}{7}$

Write the answers to the calculations.



VF
HW/Ext

2. Insert $<$, $>$ or $=$ to complete the number sentences.



VF
HW/Ext

3. Tommy is choosing between 2 packets of biscuits for a class treat.



I need to pick the largest amount so that there is enough for everyone in my class.

A. 2 lots of $1\frac{4}{10}$



B. 3 lots of $1\frac{1}{5}$



Which option should Tommy choose? Convince me.



RPS
HW/Ext