

Topic – Industrial Revolution (History)

Week 1

L.O. I can read and find out about the Industrial revolution.

Glossary

industrialised	Lots of people producing different goods in one area.
rural	The countryside.
livestock	Farm animals.
agricultural	Land that is used for farming.
migrating	Moving to a different area to find work or better living conditions.

What Was the Industrial Revolution?

The Industrial Revolution was a period of tremendous change in Britain, which lasted from around 1750 until around 1900. In this period of 150 years, almost every aspect of life in Britain changed.

It was the birth of the modern world and Britain changed from a **rural** country with small industries to a highly **industrialised** and wealthy nation.

What Is Industry?

An industry is a collection of companies all involved in the same type of production or business.

Can you think of examples of different industries?
Remember our last topic about Earning a Living.

Did You Know...?

The word revolution means a huge change. There can be different types of revolution, such as a political revolution.

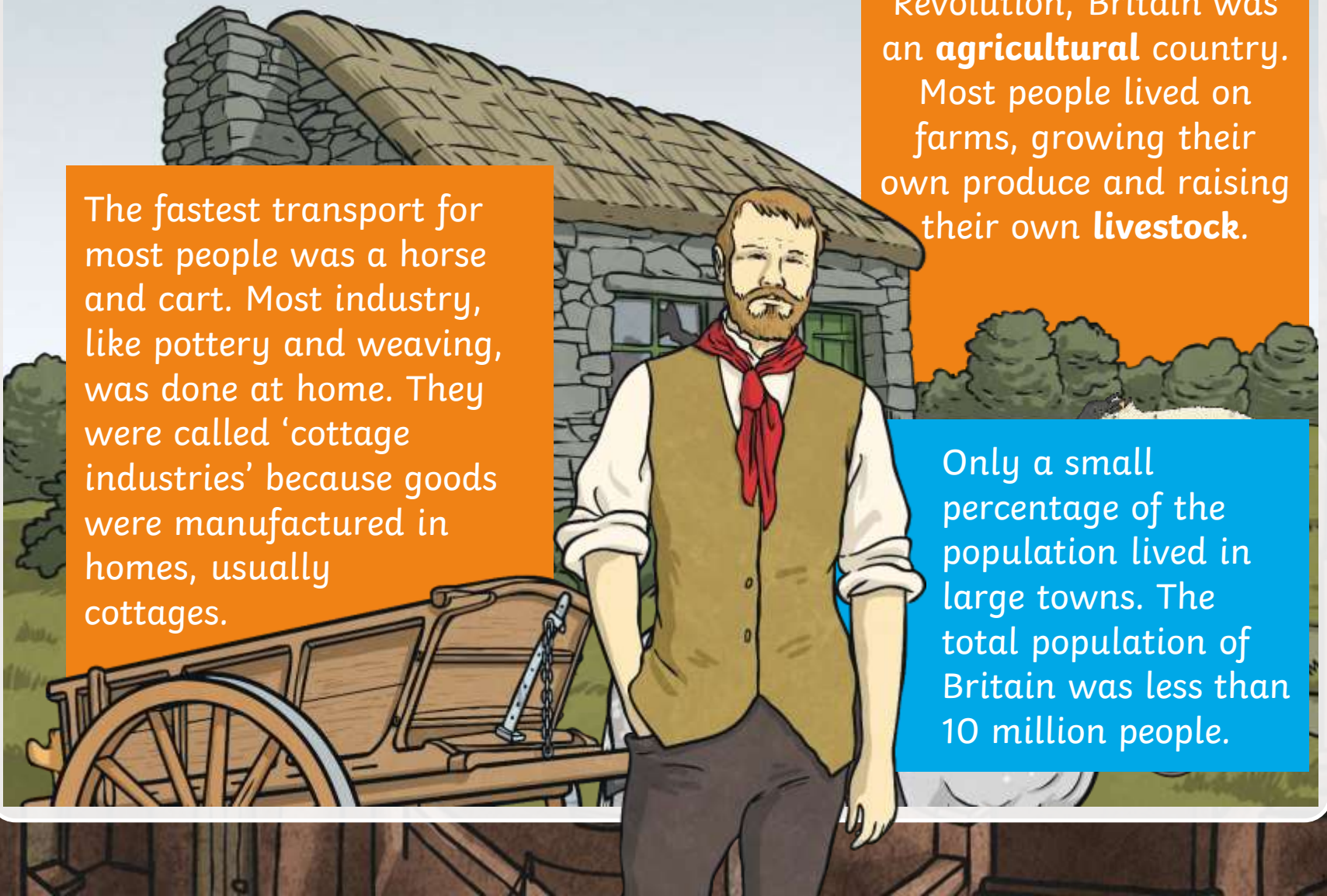


Britain in 1750

The fastest transport for most people was a horse and cart. Most industry, like pottery and weaving, was done at home. They were called 'cottage industries' because goods were manufactured in homes, usually cottages.

Before the Industrial Revolution, Britain was an **agricultural** country. Most people lived on farms, growing their own produce and raising their own **livestock**.

Only a small percentage of the population lived in large towns. The total population of Britain was less than 10 million people.



An illustration of a coal carrier in a factory setting. The carrier is a man wearing a flat cap, a blue scarf, and a light-colored, worn work shirt. He is carrying a large bundle of coal on his back, secured with a strap. He is holding a long-handled tool, possibly a shovel or a pitchfork, in his right hand. The background shows a large industrial building with multiple chimneys emitting smoke, viewed through an arched opening. The overall style is a detailed, hand-drawn illustration with a muted color palette.

Britain in 1900

After the Industrial Revolution, Britain was a country that had changed hugely. Industry had been transformed by key inventions, such as the steam engine, which led to the establishment of factories all over the country.

Most people lived in large towns, near to the factories where they worked.

Transporting people and goods across the country became much faster with the development of canals, roads and railways. The population of Britain had boomed to around 30 million people, according to the 1901 census.

Britain changed so much during the Industrial Revolution that it was almost unrecognisable. For example, a trip from Manchester to London took four days in the 1700s; by 1880, it only took four hours!

Do you think these changes would have led to any problems?

Would these problems have affected everyone in Britain?

Write your responses in the homework book.

There are no right or wrong answers. The purpose of the task is to make you think.

