

Year 1

This week we have finished our topic on volume and capacity. Have a go at these fun activities.

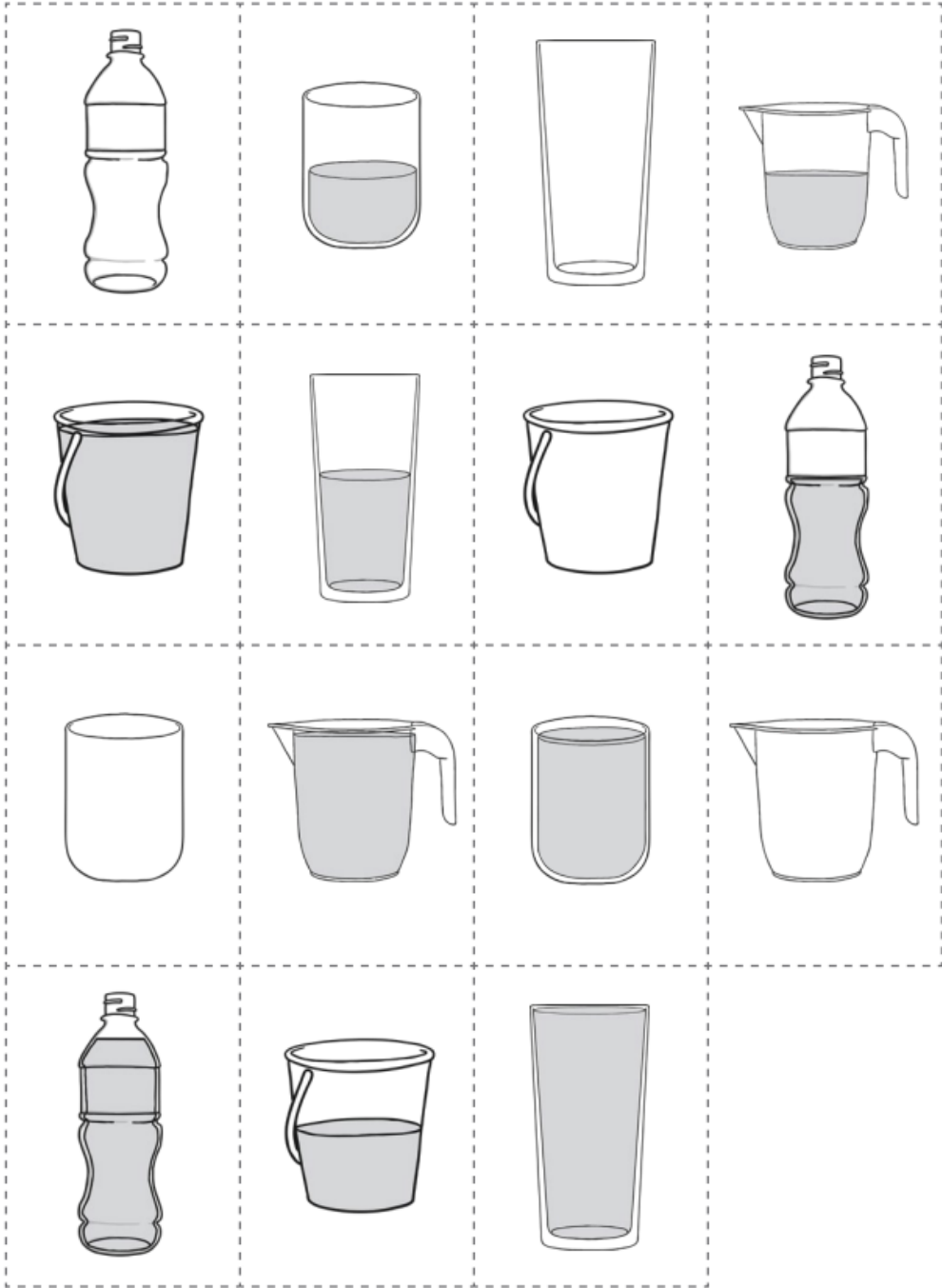
Volume

To understand capacity and volume.



Cut out the containers and decide if they are empty, half full or full.
Then sort them into the table.

Empty	Half Full	Full



Volume

To understand capacity and volume.



Draw the liquid in the bottle to match the volume.



full



empty

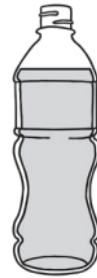


nearly empty



half full

Draw a line connecting the pictures with the correct volume.



full

nearly empty

half full

nearly full

empty

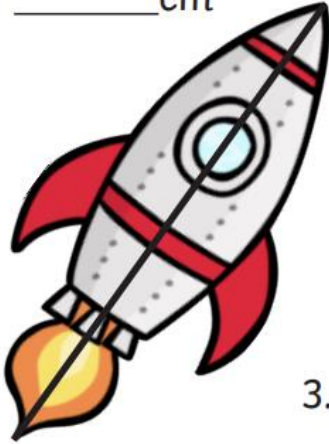
Tick the container that is half full.



Meteor Measuring

Measure the objects along the line as accurately as you can. Write your answers in centimetres.

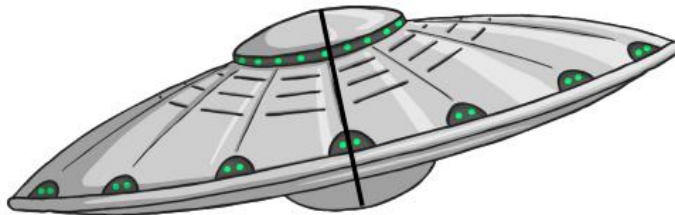
1. _____ cm



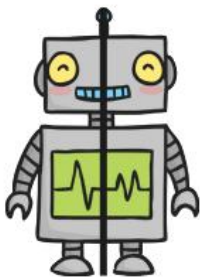
2. _____ cm



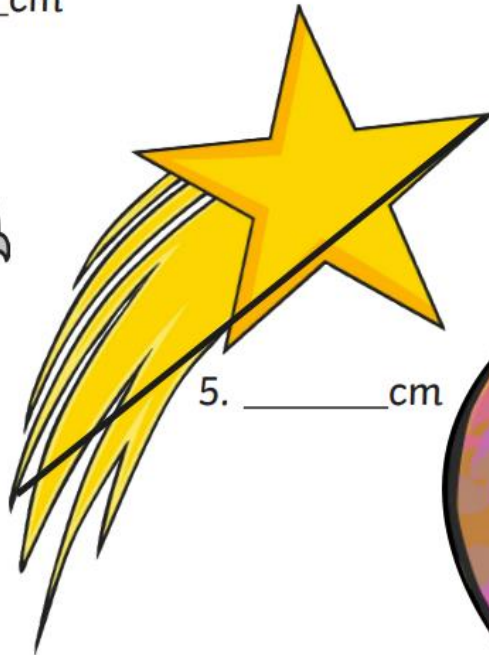
3. _____ cm



4. _____ cm



5. _____ cm



6. _____ cm

